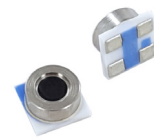
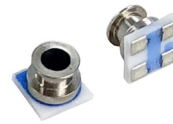
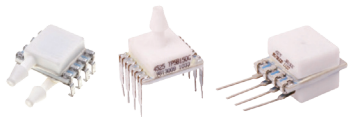


PRESSURE SENSORS



BOARD LEVEL PRESSURE SENSORS

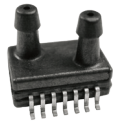
Digital Output and Altimeter



	MS4515DO, MS4525DO	MS5803	MS5837	MS5840
Package	8 pin DIL	Surface mountable	Surface mountable	Surface mountable
Type	Gage, compound (MS4515DO) Gage, absolute, differential, compound (MS4525DO)	Absolute	Absolute	Absolute
Pressure Range	0 - 2 to 30" H ₂ O (MS4515DO) 0 - 1 to 150 psí (MS4525DO)	0 - 1 to 30 bar	0 - 2 bar 0 - 30 bar	0 - 2 bar Operating range: 300 to 1200 mbar
Output/Span	14-bit ADC SPI or I ² C	24-bit ADC I ² C and SPI (Mode 0, 3)	24-bit ADC I ² C	24-bit ADC I ² C
Resolution	—	12 µbar (MS5803-01BA) 0.5 mbar (MS5803-30BA)	0.016 mbar (2 bar) 0.2 mbar (30 bar)	13 cm of air
Unique Features	<ul style="list-style-type: none"> • Optional gel coat, low power • Pressure and temperature measurement • Single supply of 3.3 or 5.0 VDC • Top, side barbed or manifold o-ring port • J lead or thru hole pins 	<ul style="list-style-type: none"> • 24-bit digital sensor, software calibration and temperature compensation (I²C and SPI), no external components • Supply voltage 1.8 to 3.6 V 	<ul style="list-style-type: none"> • Supply voltage: 1.5 to 3.6 V • Pressure and temperature measurement • Excellent long term stability • Hermetically sealable for outdoor devices • Sealing designed for 1.8 x 0.88 mm o-ring 	<ul style="list-style-type: none"> • Supply voltage: 1.5 to 3.6 V • Pressure and temperature measurement • Low power, 0.6 µA (standby ≤ 0.1 µA at 25°C) • Protected against direct sunlight
Linearity/Absolute Accuracy	0.25%/1% TEB	±1.5 mbar at 25°C (MS5803-01BA) ±250 mbar at 0°C to 40°C (MS5803-30BA)	±5 mbar (2 bar) ±400 mbar (30 bar)	±0.5mbar at 20°C ±4mbar from -20°C to 85°C
Overpressure	300 psi	10 bar (1, 2 bar) 30 bar (5, 7, 14 bar) 50 bar (30 bar)	10 bar (2 bar) 50 bar (30 bar)	—
Operating Temp.	-10°C to 85°C (MS4515DO) -25°C to 105°C (MS4525DO)	-40°C to 85°C	-20°C to 85 °C	-20°C to 85 °C
Dimensions (mm)	12.5 x 9.9	6.4 x 6.2 x 2.9	3.3 x 3.3 x 2.75	3.3 x 3.3 x 1.7mm
Typical Applications	Medical instruments, air flow measurements, process control, leak detection	Precision altimeter, diving and multi-mode watches, in-building navigation, variometers/flight instruments	Mobile water depth measurement systems, diving computers, adventure or multi-mode watches, data loggers	Altimeter and barometer applications, adventure or multi-mode watches, drones, bike computers

BOARD LEVEL PRESSURE SENSORS

Digital Output and Altimeter



MS5525DSO

Package	SOIC-14
Type	Gage, absolute, differential, compound
Pressure Range	0 - 1 to 30 psi
Output/Span	24-bit ADC SPI or I ² C protocol
Resolution	—
Unique Features	<ul style="list-style-type: none"> • 24-bit digital small outline sensor • Pressure and temperature measurement • Single supply of 1.8 or 3.6 VDC • Barb, tube and hole package style options
Linearity/Absolute Accuracy	0.25%/2.5% TEB
Overpressure	3X range
Operating Temp.	-40°C to 125°C
Dimensions (mm)	12.5 x 7.9
Typical Applications	Medical respirators, ventilators, factory automation, altitude and airspeed measurements, leak detection, home appliances



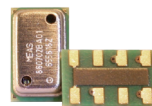
MS5607, MS5611, MS5637

Package	Surface mountable
Type	Absolute
Pressure Range	10 - 2K mbar
Output/Span	24-bit ADC I ² C
Resolution	0.016 mbar
Unique Features	<ul style="list-style-type: none"> • 24-bit digital sensor • 13 cm resolution (MS5607, MS5637) • 10 cm resolution (MS5611) • Supply voltage: 1.5 to 3.6 V (MS5637) Supply voltage: 1.8 to 3.6 V (MS5607, MS5611) • Low power, 0.6 μA (Standby ≤ 0.1 μA at 25°C)
Linearity/Absolute Accuracy	±2.0 mbar at 25°C
Overpressure	6 bar
Operating Temp.	-40°C to 85°C
Dimensions (mm)	3 x 3 x 0.9 (MS5637) 5 x 3 x 1 (MS5607, MS5611)
Typical Applications	Smart phones, tablets, personal navigation devices, tire pressure monitoring, compressors



MS5805

Package	Surface mountable
Type	Absolute
Pressure Range	10 - 2K mbar
Output/Span	24-bit ADC I ² C
Resolution	0.02 mbar
Unique Features	<ul style="list-style-type: none"> • 24-bit digital sensor • 20 cm resolution • Supply voltage: 1.8 to 3.6 V • Sealing designed for 2.5 x 1 mm o-ring • Silicone gel protection • Waterproof
Linearity/Absolute Accuracy	±2.0 mbar at 25°C
Overpressure	5 bar
Operating Temp.	-40°C to 85°C
Dimensions (mm)	4.5 x 4.5 x 3.5
Typical Applications	Mobile altimeter and barometer systems, bike computers, adventure or multi-mode watches, variometers, data loggers

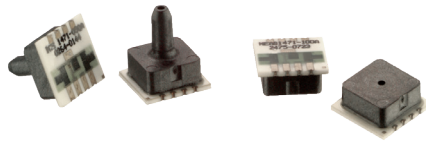


MS8607

Package	Surface mountable
Type	Absolute
Pressure Range	10 - 2K mbar
Output/Span	24-bit ADC I ² C
Resolution	0.016 mbar
Unique Features	<ul style="list-style-type: none"> • Integrated pressure, humidity and temperature • Supply voltage: 1.5 to 3.6 V • Fully factory calibrated sensor
Linearity/Absolute Accuracy	±4 mbar
Overpressure	6 bar
Operating Temp.	-40°C to 85°C
Dimensions (mm)	5 x 3 x 1
Typical Applications	Mobile water depth measurement systems, diving computers, adventure or multi-mode watches, data loggers

BOARD LEVEL PRESSURE SENSORS

mV Output



MS1451, MS1471

Package	Surface mountable
Type	Gage, absolute
Pressure Range	0 - 5 to 500 psi
Output/Span	60 mV typical
Unique Features	<ul style="list-style-type: none"> • Low cost • Coarse calibrated at room temp. (MS1471) • With gel to protect against moisture • Tube or hole
Accuracy	±0.25% non-linearity
Operating Temp.	-40°C to 125°C
Dimensions (mm)	7.6 x 7.6, application dependent
Typical Applications	Altitude measurement, barometric pressure, medical instrumentation, consumer appliances, tire pressure

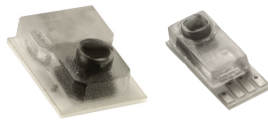


MS52xx, MS54xx

Package	Surface mountable
Type	Gage, absolute
Pressure Range	0 - 1 to 12 bar
Output/Span	150 mV, 240 mV
Unique Features	<ul style="list-style-type: none"> • Small size (MS54xx) • High linearity or high sensitivity options • Plastic tube or metal ring options • With gel to protect against moisture • High endurance (Option HM)
Accuracy	±0.05%, ±0.15% FS non-linearity (MS52xx) ±0.05%, ±0.2% FS non-linearity (MS54xx)
Operating Temp.	-40°C to 125°C
Dimensions (mm)	7.6 x 7.6, application dependent (MS52xx) 6.4 x 6.2 (MS54xx)
Typical Applications	Absolute pressure sensor systems, engine controls, high resolution altimeters, variometers, waterproof watches, diver computers, barometers, tire pressure monitoring systems (TPMS), medical instrumentation, pneumatic controls

DISPOSABLE MEDICAL PRESSURE SENSORS

mV Output



1620, 1630

Package	Hybrid assembly
Type	Gage
Pressure Range	-30 to 300 mmHg
Output/Span	5 μV/V/mmHg
Unique Features	<ul style="list-style-type: none"> • Low cost, disposable design • Supplied in tape and reel • Compliant to AAMI spec • ISO13485 certified
Operating Temp.	10°C to 40°C
Dimensions (mm)	1620: 11.43 x 8.13 x 4.20 1630: 12.7 x 5.08 x 3.94
Typical Applications	Disposable blood pressure, surgical procedures, ICU, kidney dialysis machines, medical instrumentation



Fully Assembled 1620 (Customized per customer specifications)

Package	Plastic housing
Type	Gage
Pressure Range	-30 to 300 mmHg
Output/Span	5 μV/V/mmHg
Unique Features	<ul style="list-style-type: none"> • Low cost, disposable design • Compliant to AAMI spec • Custom designs available
Operating Temp.	10°C to 40°C
Dimensions (mm)	42.8 x 30.3 x 19.0
Typical Applications	Disposable blood pressure, kidney dialysis machines, surgical procedures and intensive care units. Ready to use, fully assembled disposable sensor units with cable, connector, stop cock, flush device in a plastic housing.

MEDIA ISOLATED PRESSURE SENSOR MODULES

Digital Output



85BSD

Package	<ul style="list-style-type: none"> • 13 mm diaphragm diameter • Weldable or threaded process fittings
Type	Gage, absolute
Pressure Range	0 - 0.35 to 20 bar / 0 - 5 to 300 psi
Output/Span	14-bit ADC I ² C or SPI
Unique Features	<ul style="list-style-type: none"> • Pressure and temperature read-out • Cable and connector options • Low power option
Accuracy	±0.25% span
Total Error Band	±1.0% FSO
Overpressure	2X
Operating Temp.	-40°C to 125°C
Dimensions (mm)	Ø15.85 x 7.9
Typical Applications	Level controls, tank level measurement, corrosive fluids and gas measurement systems, sealed systems, manifold pressure measurement, submersible depth monitoring



86BSD

Package	<ul style="list-style-type: none"> • 16 mm diaphragm diameter • O-ring mount
Type	Gage, absolute
Pressure Range	0 - 0.07 to 20 bar / 0 - 1 to 300 psi
Output/Span	14-bit ADC I ² C or SPI
Unique Features	<ul style="list-style-type: none"> • Pressure and temperature read-out • Cable and connector options • Low power option
Accuracy	±0.25% span
Total Error Band	±1.0% FSO
Overpressure	2X
Operating Temp.	-40°C to 125°C
Dimensions (mm)	Ø15.82 x 9.3
Typical Applications	Level controls, tank level measurement, corrosive fluids and gas measurement systems, sealed systems, manifold pressure measurement, submersible depth monitoring



89BSD

Package	<ul style="list-style-type: none"> • 9 mm diaphragm diameter • Threaded or weldable
Type	Absolute, sealed gage
Pressure Range	0 - 6 to 30 bar
Output/Span	24-bit ADC I ² C
Unique Features	<ul style="list-style-type: none"> • Pressure and temperature read-out • Low power: 1 µA (Standby < 0.15 µA)
Accuracy	±0.3% span
Total Error Band	±3.0% FSO max.
Overpressure	2X
Operating Temp.	-40°C to 85°C
Dimensions (mm)	Ø9.04 x 7.5
Typical Applications	Level controls, tank level measurement, corrosive fluids and gas measurement systems, sealed systems, manifold pressure measurement, dive computers



154BSD

Package	<ul style="list-style-type: none"> • 19 mm diaphragm diameter • O-ring mount
Type	Gage, absolute
Pressure Range	0 - 1 to 300 psi
Output/Span	14-bit ADC I ² C or SPI
Unique Features	<ul style="list-style-type: none"> • Pressure and temperature read-out • Cable and connector options • Low power option
Accuracy	±0.25% span
Total Error Band	±1.0% FSO
Overpressure	2X
Operating Temp.	-40°C to 125°C
Dimensions (mm)	Ø19 x 13.8
Typical Applications	Level controls, tank level measurement, corrosive fluids and gas measurement systems, sealed systems, manifold pressure measurement, submersible depth monitoring

TRANSDUCERS AND TRANSMITTERS

Industrial Wireless



M5600, U5600

Type	Gage, sealed, absolute, compound
Pressure Range	0 - 50 to 15K psi (M5600), 0 - 5 to 10K psi (U5600)
Output/Span	24-bit ADC I ² C
Unique Features	<ul style="list-style-type: none"> • Pressure and temperature • 2.3 - 3.6 V supply voltage • Compact and battery-powered • Weather resistant (IP66 and IP67) • Stainless steel and polycarbonate enclosure
Accuracy	±0.25% FS (M5600) Down to ±0.1% FS (U5600)
Operating Temp.	-20°C to 85°C
Dimensions (mm)	24 x 24 x 69
Typical Applications	Industrial process control and monitoring, advanced HVACR systems, refrigeration systems, automotive test stands, off-road vehicles, pumps and compressors, hydraulic and pneumatic systems, agriculture equipment, energy generation and management
Agency Approvals	CE, FCC



MSP100

Type	Gage
Pressure Range	0 - 100 to 500 psi
Output/Span	100 mV typical
Unique Features	<ul style="list-style-type: none"> • Microfused • Low cost stainless steel isolated transducer • No threads needed for pressure connect • Highly customized for OEM application • Small size • Solid state reliability
Accuracy	±0.5% FSO
Operating Temp.	0°C to 55°C
Dimensions (mm)	12.7 x 24.38 x 20.32
Typical Applications	Beverage dispensing systems, automation, HVACR controls, energy and water management, pumps, compressors, pneumatic equipment
Agency Approvals	—



MSP300, MSP340

Type	Gage
Pressure Range	0 - 100 to 10K psi (MSP300) 0 - 50 to 10K psi (MSP340)
Output/Span	0 - 100 mV, 0.5 - 4.5 VDC, 1 - 5 VDC, 4 - 20 mA
Unique Features	<ul style="list-style-type: none"> • Microfused • Highly customized for OEM applications • Small size • Solid state reliability
Accuracy	±1% FSO
Operating Temp.	-20°C to 85°C
Dimensions (mm)	MSP300: 22.23 x 22.23 x 55.88 MSP340: 15.88 x 15.88 x 75.44
Typical Applications	Paint sprayers, braking systems, HVACR controls, energy and water management, pumps, compressors, pneumatic equipment, off road heavy equipment, agriculture equipment
Agency Approvals	UL 508 (MSP300)

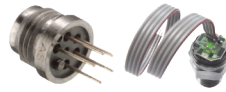
MEDIA ISOLATED PRESSURE SENSOR MODULES

Analog Output



82, 85 with Fittings

Package	Weldable (85) or process fitting
Type	Gage, absolute, vacuum gage
Pressure Range	0 - 5 to 500 psi (85), 0 - 1 to 500 psi (82)
Output/Span	100 mV typical
Unique Features	<ul style="list-style-type: none"> • Modular design
Non-linearity	±0.3% FSO (1 psi) ±0.2% FSO (5 psi) ±0.1% FSO (≥15 psi)
Operating Temp.	-40°C to 125°C
Dimensions (mm)	Fittings: application dependent
Typical Applications	Medical, process control, refrigeration compressor, oceanography, level systems



89 Button, 89 with Fittings

Package	Weldable or process fitting
Type	Sealed gage, absolute
Pressure Range	0 - 1K to 10K psi
Output/Span	100 mV typical
Unique Features	<ul style="list-style-type: none"> • High pressure • Modular design
Non-linearity	±0.25% FSO
Operating Temp.	-40°C to 125°C
Dimensions (mm)	89 Button: Ø9.04 x 13.2 89 with Fittings: application dependent
Typical Applications	Air tank pressure, hydraulics, process control, robotics, refrigeration compressors, oceanography



86A Amplified

Package	5/8" (16 mm) diameter o-ring mount
Type	Gage, absolute
Pressure Range	0 - 1 to 150 psi
Output/Span	0.5 - 4.5 VDC
Unique Features	<ul style="list-style-type: none"> • Small diameter, amplified output • Bar ranges available
Non-linearity	±1.0% FSO
Operating Temp.	-20°C to 85°C
Dimensions (mm)	Ø15.82 x 9.3
Typical Applications	Level measurement, OEM transmitters and transducers, process control

MEDIA ISOLATED PRESSURE SENSOR MODULES

Analog Output



82, 85, 85F, 86, 154N

Package	<ul style="list-style-type: none"> • 3/4" (19 mm) diameter o-ring mount (82, 154N) • 5/8" (16 mm) diameter o-ring mount (86) • 1/2" (13 mm) diameter o-ring flush mount (85F) • 1/2" (13 mm) diameter o-ring mount (85)
Type	Gage, absolute, vacuum gage (82, 85, 86, 154N) Gage, absolute (85F)
Pressure Range	0 - 1 to 500 psi (Absolute, gage: 82, 154N) 0 - 5 to 500 psi (Absolute, gage: 85, 86) 0 - 15 to 500 psi (85F, vacuum gage: 82, 85, 86, 154N)
Output/Span	100 mV typical
Unique Features	<ul style="list-style-type: none"> • High performance • High stability for OEM applications • Minimizes trapped volume (85F)
Non-linearity	±0.3% FSO (1 psi), ±0.2% FSO (5 psi) ±0.1% FSO (≥15 psi), ±0.1% FSO (85F)
Operating Temp.	-40°C to 125°C (82 / 85 / 86 / 154N), -20°C to 125°C (85F)
Dimensions (mm)	82: Ø19 x 6.48 86: Ø15.82 x 11.4 154N: Ø18.97 x 13.8 85F: Ø17.2 x 11.33 85: Ø15.85 x 9.3
Typical Applications	Hydraulic controls, process control, oceanography, refrigeration/compressors, pressure transmitters, level systems, dialysis machines, infusion pumps, medical systems



DP86 O-Ring Mount, with Fittings/Cable

Package	• 5/8" (16 mm) diameter o-ring mount or threaded process fittings
Type	Differential
Pressure Range	0 - 1 to 500 psi
Output/Span	100 mV typical/sensitivity dependent
Unique Features	<ul style="list-style-type: none"> • Wet/wet differential pressure • Line pressure max. 1,000 psi
Non-linearity	±0.3% FSO (1 psi) ±0.2% FSO (5 psi) ±0.1% FSO (≥15 psi)
Operating Temp.	-40°C to 125°C
Dimensions (mm)	O-ring: Ø15.82 x 17.5 Fittings: Application dependent
Typical Applications	Level controls, tank level measurement, corrosive fluids and gas measurement systems, flow measurement



U86B

Package	• Mountable with o-ring seal
Type	Sealed gage, absolute
Pressure Range	0 - 5 to 13 bar/0 - 50 to 200 psi
Output/Span	0.5 - 4.5 VDC (Ratiometric output)
Unique Features	• Amplified
Non-linearity	±0.5% FSO
Operating Temp.	-7°C to 105°C
Dimensions (mm)	Ø15.82 x 13.6 Socket spacing: 31.75
Typical Applications	Urea level, urea pressure, air brakes, corrosive fluid measurement for engine & vehicle applications

TRANSDUCERS AND TRANSMITTERS

Industrial



	US300	AST20HA, AST20PT, AST20SW	AST4000, AST4100, AST4200
Type	Gage, absolute	Gage, sealed gage, absolute	Gage, sealed gage, compound
Pressure Range	0 - 15 to 5K psi	0 - 1 to 60K psi	0 - 25 to 10K psi
Output/Span	0 - 10 mV/V, 0.5 - 4.5 V, 1 - 5 V, 4 - 20 mA	0.5 - 4.5 V (Ratiometric) 1 - 5 V 4 - 20 mA, 0 - 5 V, 0 - 10 V, switch (AST20SW)	0.5 - 4.5 V (Ratiometric), 1 - 5 V, 1 - 10 V, 4 - 20 mA, 0.5 - 2.5 V
Unique Features	<ul style="list-style-type: none"> • UltraStable technology • Highly customized for OEM applications • Small size • Solid state reliability 	<ul style="list-style-type: none"> • Excellent performance over temperature • Semi-custom designs available • Fault mode condition settings • Four standard sensor material options • Additional temperature output (AST20PT) 	<ul style="list-style-type: none"> • Four standard sensor material options • Rugged construction • 100 V/m EMI/RFI protection • Semi-custom designs available
Accuracy	±0.15% FSO (15 - 1K psi), ±0.25% FSO (>1K psi)	±0.1% FSO	±0.5% FSO
Operating Temp.	-40°C to 105°C	-40°C to 85°C	-40°C to 85°C
Dimensions (mm)	15.88 x 15.88 x 98.00	Application dependent	Application dependent
Typical Applications	Paint sprayers, braking systems, HVACR controls, energy and water management, pumps, compressors, pneumatic equipment, off road heavy equipment, agriculture equipment	Test and measurement, industrial controls	Water, hydraulic equipment, HVACR, industrial controls
Agency Approvals	—	ABS, CE	UL/cUL508, ABS, CE



	M3200	M5200	U5200, U5300	D5100
Type	Gage, Compound	Gage, sealed, compound	Gage, sealed, absolute, compound	Differential wet/wet
Pressure Range	0-7bar to 500 bar / 0-100 to 7,500 Psi	0 - 3.5 to 1K bar/0 - 50 to 15K psi	0 - 0.14 to 700 bar/0 - 2 to 10K psi	0 - 0.07 to 35 bar/0 - 1 to 500 psi
Output/Span	100mV, 0.5 - 4.5 V, 1 - 5 V, 0 - 5 V, 0 - 10 V, 4 - 20 mA and I ² C Digital Output	0.5 - 4.5 V, 1 - 5 V, 0 - 5 V, 0 - 10 V, 4 - 20 mA, 1 - 6 V	0.5 - 4.5 V, 1 - 5 V, 0 - 5 V, 0 - 10 V, 4 - 20 mA, 1 - 6 V	80 mV / 100 mV, 0.5 - 4.5 VDC, 1 - 5 VDC, 4 - 20 mA
Unique Features	<ul style="list-style-type: none"> • Microfused technology • High performance at a low cost • Solid state reliability • ±1.5% FSO TEB (-20°C to 85°C) • Weatherproof - IP67 with cable • 14bit digital output for Pressure 	<ul style="list-style-type: none"> • Microfused technology • High performance at a low cost • Solid state reliability • ±1% FSO TEB (-20°C to 85°C) • Weatherproof • 17 - 4 PH or 316L SS 	<ul style="list-style-type: none"> • UltraStable technology • High performance at a low cost • ±0.75% FSO TEB (-20°C to 85°C, >5 psi and ≤5000 psi) (U5200) • ±0.5% FSO TEB (-20°C to 85°C) (U5300) • Weatherproof • High accuracy (U5300) 	<ul style="list-style-type: none"> • UltraStable technology • High performance at a low cost • Solid state reliability • ±1% FSO TEB (-20°C to 85°C) • Line pressure max. 1000 psi
Accuracy	±0.25% FSO	±0.25% FSO	±0.1% FSO (>5 and ≤500 psi)	±0.3% FSO (<5 psi), ±0.25% FSO (5 psi), ±0.1 % FSO (≥15 psi)
Operating Temp.	-40°C to 125°C	-40°C to 125°C	-40°C to 125°C	-40°C to 125°C
Dimensions (mm)	22.2 on Hex x 58 max	24 X 24 X 82 max.	24 X 24 X 82 max.	25.4 x 58.4 x 72.0
Typical Applications	Suitable for measurement of liquid or gas pressure, even for difficult media such as contaminated water, steam, and mildly corrosive fluids.	Industrial process control and monitoring, advanced HVACR systems, refrigeration systems, automotive test stands, off road vehicles, pumps and compressors, hydraulic and pneumatic systems, agriculture equipment, energy generation and management	Industrial process control and monitoring, advanced HVACR systems, refrigeration systems, automotive test stands, off road vehicles, pumps and compressors, hydraulic and pneumatic systems, agriculture equipment, energy generation and management, military and aerospace test stands, calibration equipment, high accuracy applications, stationary motor fuel control, high end industry machinery	Process controls, tank level measurement, filter performance monitoring, corrosive fluids and gas measurement systems, flow measurement
Agency Approvals	CE (EMC)	CE (EMC)	CE (EMC), UL 508	CE (EMC)

TRANSDUCERS AND TRANSMITTERS

Heavy Industrial



	M7100, U7100	P900, P981, P1200, P700, P9000	P101, P105, P125
Type	Gage, no vent gage (M7100) Gage, sealed gage, absolute (U7100)	Gage, absolute	Gage
Pressure Range	0 - 10 to 700 bar/0 - 150 to 10K psi (M7100) 0 - 1 to 10 bar/0 - 15 to 150 psi (U7100)	0 - 5 bar to 700 bar/0 - 75 to 10K psi	0 - 10 to 7K bar/0 - 150 to 100K psi
Output/Span	0.5 - 4.5 VDC [Ratiometric output] 1 - 5 VDC [Regulated] (M7100) 0.5 - 4.5 VDC [Ratiometric output] (U7100)	0 - 5 VDC, 0 - 10 VDC, 4 - 20 mA	7.5 to 20 mV (4 V; 5 V optional)
Unique Features	<ul style="list-style-type: none"> • ±1% FSO TEB (-20°C to 85°C) • Solid state reliability • Survives high vibration and immersion • Microfused technology (M7100) • UltraStable technology (U7100) • Copper tube for HVACR (M7100) 	<ul style="list-style-type: none"> • High overpressure (10X over pressure) • Shock and vibration resistant • Heavy industrial grade transducer (P9000) • Advanced digital compensation / calibration • Mechanical over pressure stops • High temperature operation 	<ul style="list-style-type: none"> • Stainless steel diaphragm • Female pressure connectors: M16 x 1.5, M20 x 1.5, 1/4 NPT • Metal to metal seal
Accuracy	0.25% FSO	0.1% to 0.2% FSO	±0.3% FSO
Operating Temp.	-40°C to 125°C	-54°C to 120°C	-20°C to 80°C
Dimensions (mm)	26.7 x 26.7 x 50.0	Application dependent	Ø29 x 85 max.
Typical Applications	HVACR refrigeration controls, off road vehicles engine control, compressors, hydraulic, energy and water management	Steel mills, hydraulic controls, power generation equipment, torpedo depth, military and aerospace, vehicle braking systems	Harsh environments, aggressive liquids
Agency Approvals	CE (EMC), UL 508	CE, CENELEC (Intrinsically Safe)	—

TRANSDUCERS AND TRANSMITTERS

Miniature



	XP	XPC10
Type	Gage, sealed, absolute	Gage, sealed, absolute
Pressure Range	0 - 1 to 350 bar/0 - 15 to 5K psi (XP5, XPM10) 0 - 5 to 200 bar/0 - 75 to 3K psi (XPM4) 0 - 100 to 1K bar/0 - 1.5K to 15K psi (XPM6)	0 - 10 to 500 bar/0 - 150 to 7.5K psi
Output/Span	20 - 100 mV, 4 V FSO (Amplified)	12 mV FSO, 4 V FSO (Amplified)
Unique Features	<ul style="list-style-type: none"> • Titanium construction (XP5, XPM4) • Stainless steel housing (XPM6, XPM10) • Amplified output options (XP5, XPM6, XPM10) • Cable and connector options • For static and dynamic applications 	<ul style="list-style-type: none"> • Amplified output available • For static and dynamic applications • Optional IP67 ingress protection • High temperature operation
Accuracy	Down to ±0.25% FSO (XP5, XPM6, XPM10), down to ±0.35% FSO (XPM4)	Down to ±0.25% FSO
Operating Temp.	-40°C to 120°C	-40°C to 220°C
Dimensions (mm)	XPM4: M4 x 0.7 thread; Hex 8 XP5: M5 x 0.8 or 10-32 UNF thread; Hex 10 XPM6: M6 x 1 thread; Hex 12 XPM10: M10 x 1 thread; Hex 15	M10 x 1 or 3/8-24 UNF thread; Hex 15
Typical Applications	Corrosive liquids and gases, braking system pressure, onboard equipment monitoring, military and aerospace, explosive test benches, robotics and effectors, laboratory and research, extreme miniature devices	Aerospace, test benches, oven monitoring equipment, cooling regulation systems

TRANSDUCERS AND TRANSMITTERS

Miniature



	EB, EPRB	EPIH	EPB, EPB-PW, EPL
Type	Gage, sealed, absolute	Gage, sealed, absolute	Gage, sealed, absolute
Pressure Range	0 - 0.35 to 700 bar/0 - 5 to 10K psi	0 - 0.35 to 20 bar/0 - 5 to 300 psi	0 - 0.35 to 350 bar/0 - 5 to 5K psi
Output/Span	0.5 to 4.5 VDC	12 mV to 75 mV	10 mV to 125 mV
Unique Features	<ul style="list-style-type: none"> • High accuracy • Miniature design • UltraStable technology • EMI protected • Combined pressure and temperature 	<ul style="list-style-type: none"> • Diffused silicon diaphragm with a large variety of sizes and shapes available as small as 0.05" outside diameter • High frequency response (To 1.7 MHz) • Ultra-miniature design 	<ul style="list-style-type: none"> • Miniature flush mountable • Flush stainless steel diaphragm, flanged or non-flanged • Bonded silicon gage, high frequency response (To 400 KHz) • IP68 ingress protection in Titanium construction (EPB-PW)
Accuracy	±0.25% FSO	±1.0% FSO	±0.5 to ±1% FSO
Operating Temp.	-40°C to 125°C (Available option up to 150°C)	-40°C to 120°C	-40°C to 120°C
Dimensions (mm)	11 body diameter	Application dependent	3.2 to 7 outside diameter
Typical Applications	Motor sport, hydraulic/pneumatic systems, automotive test stands, military and aerospace test stands	Aerospace testing, wind tunnels, biomedical testing, aircraft body and wing dynamics, high frequency measurements	Air flow testing, hydraulic pressure systems, air pressure systems, bearing studies, ballistics, water hammer, miniature scale model testing, centrifuge pore water pressure measurements
Agency Approvals	CE (EMC)	—	—

TRANSDUCERS AND TRANSMITTERS

Liquid Level



	U5700	AST45xx
Type	Gage, sealed, absolute, compound	Gage, absolute
Pressure Range	0 - 2 to 10K psi	0 - 1 to 100 psi (AST4500, AST4510, AST4520)
Output/Span	0.5 - 4.5 V, 1 - 5 V, 0 - 5 V, 0 - 10 V, 4 - 20 mA, 1 - 6 V	0.5 - 4.5 V [Ratiometric], 1 - 5 V, 4 - 20 mA, 0.5 - 2.5 V
Unique Features	<ul style="list-style-type: none"> • UltraStable technology • High accuracy • IP68 rated connection and submersible • Polyurethane jacketed cable • Optional Polyoxymethylene cap 	<ul style="list-style-type: none"> • Intrinsically safe ratings • Material options including: 316L, alloy C276, and PVDF • Low power options • High quality cable options
Accuracy	0.1% FSO	±0.25% FSO
Operating Temp.	-10°C to 60°C	-40°C to 85°C
Dimensions (mm)	22.23 x 22.23 x 98.04	Application dependent
Typical Applications	Industrial process control and monitoring, advanced HVACR systems, refrigeration systems, automotive test stands, off road vehicles, pumps and compressors, hydraulic/pneumatic systems, agriculture equipment, energy generation and management, liquid level applications	Diesel tanks, chemical tanks, water tanks
Agency Approvals	CE (EMC)	UL/CSA Class I Div I, ATEX/IECEx Exia, ABS, CE

TRANSDUCERS AND TRANSMITTERS

Hazardous Location



AST43xx, AST44xx

Type	Gage, sealed gage, compound, absolute
Pressure Range	0 - 1 to 15 psi (AST43LP, AST44LP) 0 - 25 to 20K psi (AST4300, AST4400, AST4401)
Output/Span	0.5 - 4.5 V [Ratiometric], 1 - 5 V, 4 - 20 mA, 0.5 - 2.5 V
Unique Features	<ul style="list-style-type: none"> • Available with 316L, Hastalloy C276, or Inconel 718 materials • Low current consumption options • Low power options • High proof and burst pressure
Accuracy	±0.25% FSO
Operating Temp.	-40°C to 85°C
Dimensions (mm)	Application dependent
Typical Applications	Compressors, well sites, ships, factory automation, SCADA equipment, offshore equipment
Agency Approvals	UL/CSA Class I Div I and II, ATEX/IECEX Exia/Exn, CCOE, CNEx, ABS, CE



AST46xx

Type	Gage, sealed gage, compound, absolute
Pressure Range	0 - 1 to 20K psi
Output/Span	0.5 - 4.5 V [Ratiometric], 1 - 5 V, 4 - 20 mA, 0.5 - 2.5 V, switch (AST46SW)
Unique Features	<ul style="list-style-type: none"> • Available with 316L, Hastalloy C276, or Inconel 718 materials • Low current consumption options • Low power options • Local display (AST46DS) • Additional temperature output
Accuracy	±0.25% FSO (AST4600, AST46DS), ±0.1% FSO (AST46HA, AST46PT)
Operating Temp.	-40°C to 85°C
Dimensions (mm)	Application dependent
Typical Applications	SCADA/RTU, well sites, offshore equipment, hydraulic controls
Agency Approvals	CSA Class I/II Div I, ATEX/IECEX Exd, ABS, CE



AST5100, AST5300, AST5400

Type	Differential
Pressure Range	0 - 5 H ₂ O to 5K psi
Output/Span	0.5 - 4.5 V [Ratiometric], 0 - 5 V, 1 - 5 V, 4 - 20 mA
Unique Features	<ul style="list-style-type: none"> • Wide range of pressures available • Full line pressure on either side without zero shifts • Hazardous location approvals (AST5300, AST5400)
Accuracy	±0.25% FSO (AST5100, AST5300), 1% TEB (AST5400)
Operating Temp.	-40°C to 85°C
Dimensions (mm)	Application dependent
Typical Applications	Filter monitoring, flow measurement, tank level measurement
Agency Approvals	CSA Class I/II Div I and II, ATEX/IECEX Exd/Exn, ABS, CE



AST2000H2

Type	Gage, sealed gage
Pressure Range	0-10 PSI to 10000 PSI
Output/Span	0.5 - 4.5 V [Ratiometric] 1 - 5 V, 4 - 20 mA
Unique Features	<ul style="list-style-type: none"> • 20 bar, 448 bar, 900 bar • High pressure H2 Storage • CE EN61326
Accuracy	±0.25% BFSL
Operating Temp.	-40°C to 85°C
Dimensions (mm)	Application dependent
Typical Applications	PEM fuel cells, hydrogen storage, hydrogen filling stations, backup power
Agency Approvals	EC-79 e24*79/2009*406/2010*0006*02 CE EN61326