



INDUSTRIAL & COMMERCIAL TRANSPORTATION SERIES BRIEF

Unsealed AMP MCP 18P Monoblock Connector With Reduced Mating Force

The AMP MCP 18P monoblock connector is a secure and cost-efficient addition to our extensive product portfolio of unsealed AMP MCP connectors. It has a new lever design which provides a reduced mating force below 75 N, and so eases the assembly process - while the required secondary locking feature helps to keep contacts aligned.

Featured:

AMP MCP 18P MONOBLOCK CONNECTOR

SPECIFICATIONS

Contact System:

AMP MCP 2.8

Current Rating:

Up to 40 amps

Degree of Protection:

IP30

Maximum Voltage:

24 V DC

Operating Temperature:

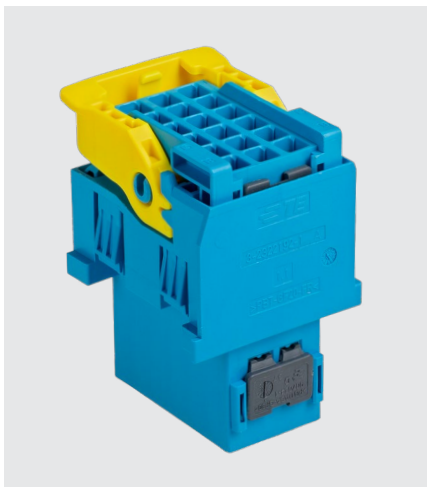
-40°C to +105°C

Flammability:

UL 94 V-0 Material
(housing only)

Additional Information:

- Application Specification 114-94610
- Product Specification 108-94718



These connectors are constructed from flame-retardant UL 94 V-0 material and use the widely-adopted AMP MCP 2.8 contact system - making them the optimal solution for a variety of applications including bulkhead, in-cabin and fuse & relay boxes.

There are four color codings available, and the connector also fits into existing bulkhead cut-outs - easing assembly on both new and existing designs, with no changes required.

Applications



Bulkhead



In-Cabin



Fuse & Relay Boxes

Target Markets



Truck



Bus



Construction



Agriculture



Special Vehicles



Automotive

Part Numbers

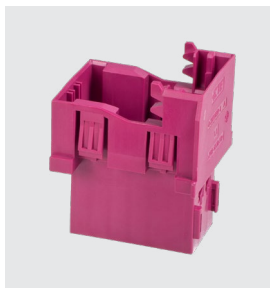
Here are the part numbers for the AMP MCP 18P monoblock connector.



18 Pos Rec Housing with Lever

Part Number

REC HOUSING, 18 POS, AMP MCP 2.8, CODE A (BLACK)	1-2322190-1
REC HOUSING, 18 POS, AMP MCP 2.8, CODE B (WHITE)	2-2322190-1
REC HOUSING, 18 POS, AMP MCP 2.8, CODE C (BLUE)	3-2322190-1
REC HOUSING, 18 POS, AMP MCP 2.8, CODE D (VIOLET)	4-2322190-1



18 Pos Tab Housing

Part Number

TAB HOUSING, 18 POS, AMP MCP 2.8, CODE A (BLACK)	1-2322192-1
TAB HOUSING, 18 POS, AMP MCP 2.8, CODE B (WHITE)	2-2322192-1
TAB HOUSING, 18 POS, AMP MCP 2.8, CODE C (BLUE)	3-2322192-1
TAB HOUSING, 18 POS, AMP MCP 2.8, CODE D (VIOLET)	4-2322192-1



Accessories

Part Number

SECONDARY LOCKING DEVICE	967634-1
--------------------------	----------

te.com/ict

TE Connectivity, TE connectivity (logo), and AMP MCP are trademarks. All other logos, products and/or company names referred to herein might be trademarks of their respective owners.

The information given herein, including drawings, illustrations and schematics which are intended for illustration purposes only, is believed to be reliable. However, TE Connectivity makes no warranties as to its accuracy or completeness and disclaims any liability in connection with its use. TE Connectivity's obligations shall only be as set forth in TE Connectivity's Standard Terms and Conditions of Sale for this product and in no case will TE Connectivity be liable for any incidental, indirect or consequential damages arising out of the sale, resale, use or misuse of the product. Users of TE Connectivity products should make their own evaluation to determine the suitability of each such product for the specific application.

© 2019 TE Connectivity Ltd. family of companies All Rights Reserved.

1-1773981-8 EN 09/19 Original

SERIES BRIEF

Contact us

4849 Hempstead Station Drive
Kettering, OH 45429 USA

Tel: +1 800 522 6752

www.te.com